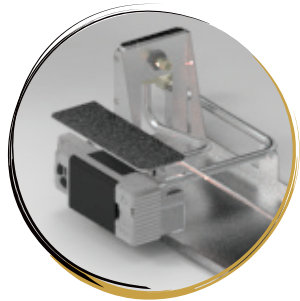


onyx Avanti Gas

Simple Installation and Servicing

With their many ergonomic features, Avanti Gas fires are designed for an optimised installation and servicing experience.



Easy-Access Engine

With some landscape gas fires, it can be difficult to access the engine and control system during servicing. With the Avanti, however, we've minimised the steps for getting to the fire's inner workings.

Compact Control System

The Avanti's control system joins its valve and remote receiver unit into one compact component. This doesn't just result in a fast setup. Crucially, the reduced number of parts makes for a super-simple fault-finding and servicing process.



Ergonomic Front-Glass Handles

The glass front-panes on Avanti models feature two ergonomically situated side handles. These allow for a balanced weight distribution, so you can handle the glass smoothly and with total control.



Direct Frame Attachment

The Avanti's sleek and stylish Edge+ and Expression frames make installation far less time-consuming than with other landscape fires. Not only are just four screws needed to fix either frame directly to the fire, but both the Expression and the Edge+ serve to reduce time spent plastering.



Expression Frame



Edge+ Frame

Easy Fit, Easy Finish

Whether opting for a frameless Edge or a framed installation, the Avanti Gas simplifies fitting. With its rectangular design that encompasses all of the firebox, the fire can be easily installed into a pre-prepared chamber, and finished easily with pre-cut plasterboard. The Expression frame is especially notable, with its wide profile covering both the base and flanges of the appliance, completely removing the need to neatly plaster up to the fire itself.

No Extra Ventilation Required

Both the Avanti 65 and the 85 have nominal inputs of less than 7kW Nett. Under most circumstances, they won't require any additional ventilation in the property.

Experience Realism

The Avanti burner system creates a glowing ember-effect bed and wrap-around, rolling flames placed in thoughtful points around the log-effects, mirroring a traditional woodburning fire.



Easy-access engine for faster servicing

When it comes to servicing and fault-finding on an Avanti gas fire, getting to its engine and compact control system is highly convenient. Engineered for fast access, you can start servicing in just 10 quick and easy steps. The Avanti's engine is also accessible even while the Echoflame black glass lining panels remain in situ.

Simple 10 Step Process

1 Remove magnetic side panels

2 Unscrew and remove frame if required

3 Remove bottom trim

4 Unscrew three glass-retention screws

5 Remove glass

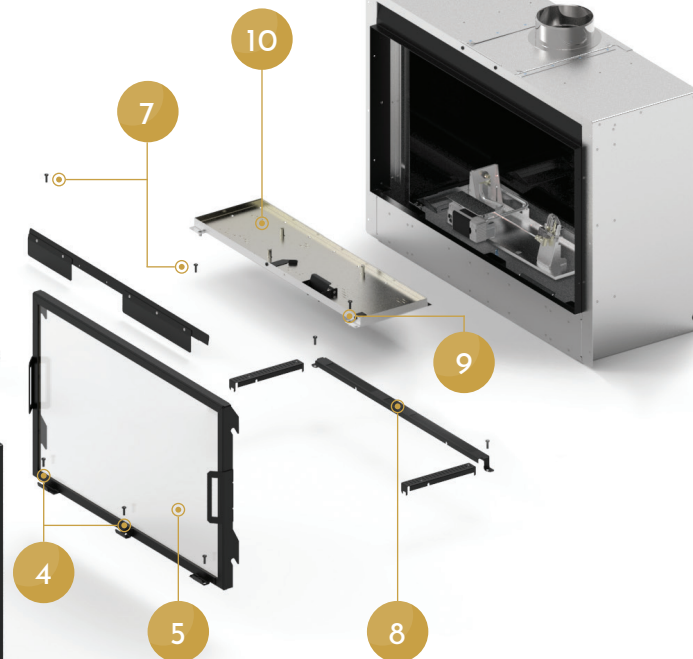
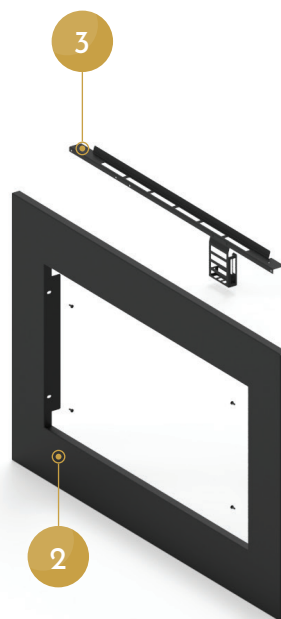
6 Remove logs

7 Unscrew four screws

8 Remove Infill Trims

9 Remove one last screw

10 Slide out burner



Product Codes

	Avanti 65	Avanti 85
Nat Gas	128-003	128-045
LPG	128-410	128-437
Edge+	928-005	928-027
Expression	928-018	928-036

